

# PRIMO RANGE

LIPOSCULPTURE



CLOVERLEAF MEDICAL   
SUPPLIERS OF SURGICAL PRODUCTS

[WWW.CLOVERLEAFPRODUCTS.COM](http://WWW.CLOVERLEAFPRODUCTS.COM)

TEL: 01494 876 990 FAX: 01494 876 991 EMAIL: [INFO@CLOVERLEAFPRODUCTS.COM](mailto:INFO@CLOVERLEAFPRODUCTS.COM)  
6-10 CHURCH FARM COURTYARD, HIGH STREET, CHALFONT ST GILES, BUCKINGHAMSHIRE HP8 4QH

CLOVERLEAF MEDICAL   
SUPPLIERS OF SURGICAL PRODUCTS

**CLOVER LEAF'S ENSEMBLE LIPOSUCTION RANGE**

Established in 1980 as a key provider to the plastic surgery industry, Clover Leaf have been instrumental or directly responsible for marketing and providing many of the products that today Britain's plastic surgeons regard as necessities. High upon this list would be liposuction equipment. Clover Leaf were the first providers of liposuction equipment to the UK even introducing such standards as the Mercedes Tip Cannula. As you can imagine with 26 years of experience our knowledge of the equipment you need in order to perform successful procedures is unsurpassed.

We have in this catalogue provided a comprehensive guide to the products we feel best carry out all aspects of liposuction procedures.

- Aspiration
- Tumescant infiltration
- Micro infiltration/fat transfer
- Cannula

Without compromising quality, we have endeavoured to keep prices as low as possible; in fact we think you will be very pleasantly surprised by our quotations. We are not interested in selling "the machine that goes bleep" for ridiculous money, we just want to make sure that you can do your job successfully because we have done ours properly.

With such a vast array of equipment being available, ordering can appear confusing. We have tried to simplify the systems available and have created a range of standard stock items. Bespoke items are also available at no additional cost. We hold a large comprehensive range of stock items, our aim is to offer next day delivery on all products within this catalogue if required.



Due to the ability of each of our systems to interlink we have taken to describing the group of products as our ensemble liposuction range (en-semble) n. 1. A unit or group of complementary parts that contribute to a single effect).

**1 - 13 MIC/INF Cannula**

These very popular small tissue infiltration needles are available in three tip style preferences. Two variants of diameter and length. Leur-lock fitted.

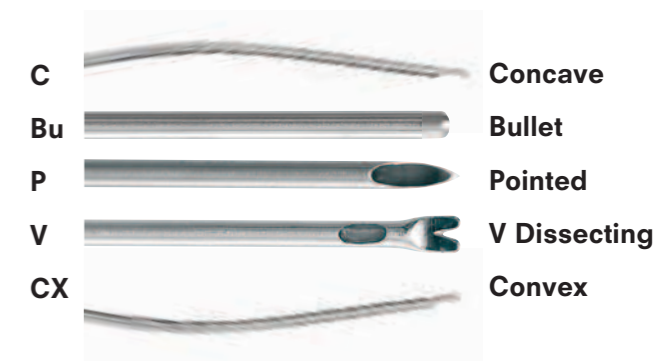


Standard Sizes listed although any size can be specially requested.

- |    |          |                        |
|----|----------|------------------------|
| 1  | MIC18/A7 | 7cm 18ga Style A Micro |
| 2  | MIC18/B7 | 7cm 18ga Style B Micro |
| 3  | MIC18/C7 | 7cm 18ga Style C Micro |
| 4  | MIC18/A9 | 9cm 18ga Style A Micro |
| 5  | MIC18/B9 | 9cm 18ga Style B Micro |
| 6  | MIC18/C9 | 9cm 18ga Style C Micro |
| 7  | MIC14/A7 | 7cm 14ga Style A Micro |
| 8  | MIC14/B7 | 7cm 14ga Style B Micro |
| 9  | MIC14/C7 | 7cm 14ga Style C Micro |
| 10 | MIC14/A9 | 9cm 14ga Style A Micro |
| 11 | MIC14/B9 | 9cm 14ga Style B Micro |
| 12 | MIC14/C9 | 9cm 14ga Style C Micro |

**1 - 13 Alternative Configurations**

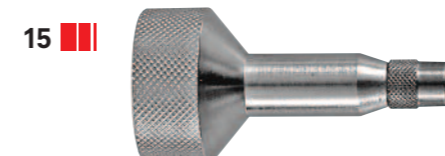
Micro infiltration cannula can be configured to the following special requests. Delivery period may be extended. Please quote code configuration.



**14 - 16 Transfer Systems**

Leak proof aseptic, trouble free ways to connect system to system.

- |    |           |                           |
|----|-----------|---------------------------|
| 14 | MIC/LLS   | 60cc to leur-lock Syringe |
| 15 | MIC/LLN   | 60cc to leur-lock needle  |
| 16 | MIC/LL/LL | Leur-lock to leur-lock    |





**17 ■■■ MIC/DRF – Dr Fischers set**

We are pleased to introduce Dr Giorgio Fischers' new Lipo-Filling instruments. These instruments were designed, and are manufactured in cooperation with Dr. Fischer himself. Each "Lipo-Filler" needle comes with a stainless steel handle, thin wire rod for clearing possible needle obstructions.

- 16ga x 15cm curved lipo-filler needle
- 16ga x 12cm curved lipo-filler needle
- 16ga x 10cm straight lipo-filler needle
- 3mm x 15cm harvesting needle
- 14ga x 10cm straight hypo needle

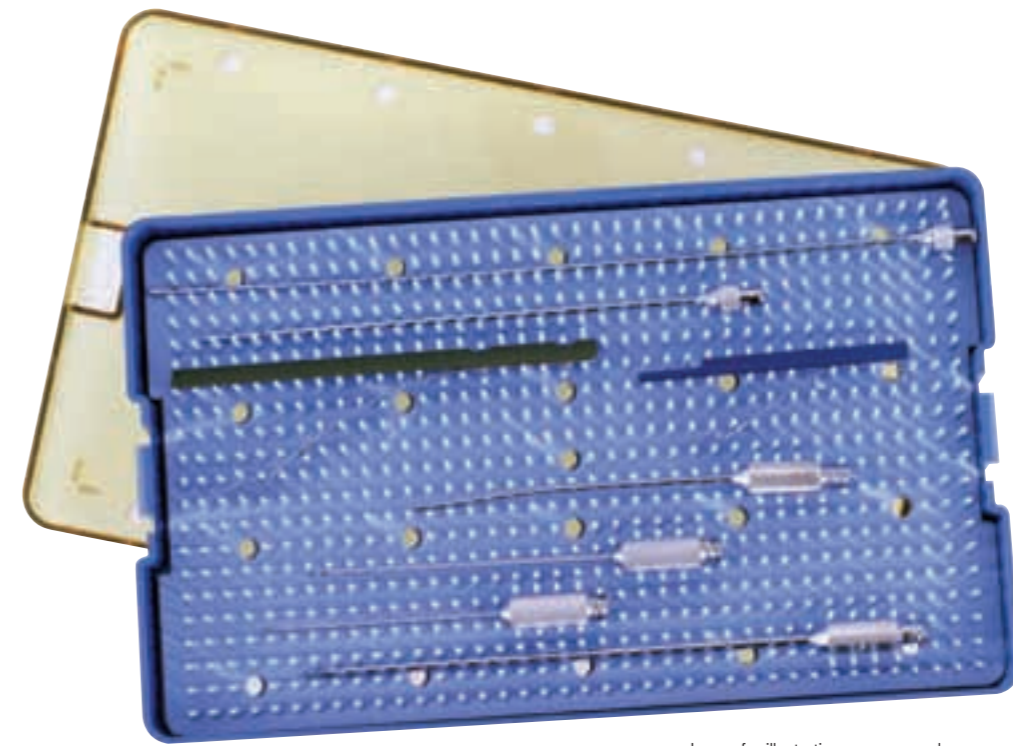


Image for illustration purposes only

**24 - 25 ■■■ Micro Cannula Sets**

Designed to work for all standard Micro Transfer cases and to make your life easier.

**24 ■■■ SET 1. PRIMO CHOICE**

- 2mm x 10 cm Infusion Needle
- 3mm x 15 cm Micro Harvest Cannula
- 2 mm x 9 cm Style A Cannula
- 2 mm x 9 cm Style B Cannula
- 2 mm x 9 cm V dissector/re-injection
- 60cc Syringe Lock
- 10cc Syringe Lock
- Cleaning Stylets x 4
- Leur Lock to Leur Lock Transfer
- Autoclavable Carrying Case

**25 ■■■ SET 2. PRIMO SUPERIOR**

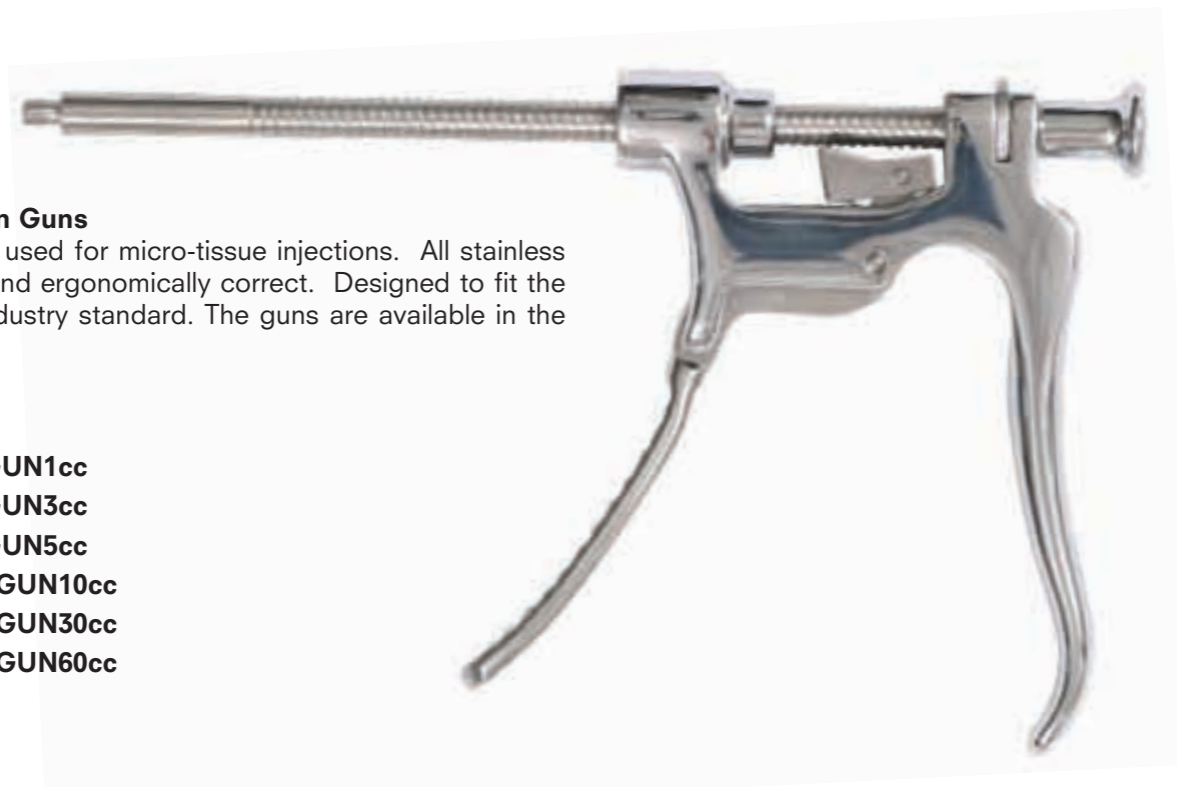
- 2mm x 10 cm Infusion Needle
- 2mm x 15 cm Infusion Needle
- 3mm x 15 cm Micro Harvest Cannula
- 2 mm x 9 cm Style A Cannula
- 2 mm x 9 cm Style B Cannula
- 2 mm x 9 cm V dissector/re-injection
- 2 mm x 15 cm curved convex Cannula
- 2 mm x 7 cm Style A
- 60cc Syringe Lock
- 10cc Syringe Lock
- Cleaning Stylets x 4
- Leur Lock to Leur Lock Transfer
- Autoclavable Carrying Case

Available in alternative constructions if required

**18 - 23 ■■■ Injection Guns**

Stress free method used for micro-tissue injections. All stainless steel construction and ergonomically correct. Designed to fit the BD syringes, the industry standard. The guns are available in the following sizes:

- 18 ■■■ 1cc - MIC/GUN1cc
- 19 ■■■ 3cc - MIC/GUN3cc
- 20 ■■■ 5cc - MIC/GUN5cc
- 21 ■■■ 10cc - MIC/GUN10cc
- 22 ■■■ 30cc - MIC/GUN30cc
- 23 ■■■ 60cc - MIC/GUN60cc



**26 - 31 ■■■ Syringe Locks**



- 26 ■■■ 10cc – SQUARE 10
- 27 ■■■ 30cc – SQUARE 30
- 28 ■■■ 60cc – SQUARE 60



- 29 ■■■ 10cc – SNAP 10
- 30 ■■■ 30cc – SNAP 30
- 31 ■■■ 60cc – SNAP 60

32 ■■■ MIC/CEN – Centrifuge



33 ■■■ Mic/Fil/Hub – 60cc Filter Hub

Popular and inexpensive alternative to centrifuge use. Simply attach 60cc Toomey syringe containing harvested fat onto one end of the hub and the empty syringe to the other. By passing the tissue through the mesh fibrous tissue will be removed and the fat “smoothed” for re-injection. This can also be used as a 60cc syringe stand for fluid separation.



38 ■■■ MIC/TIS/TRAN – Tissue Transfer System



The Simplest way to Transfer Autogenous fat we have seen, using reduced machine suction simply aspirate until the internal syringe is filled. The holes drilled into the internal syringe are too small for the fat to escape, thus only fluids are evacuated, leaving effectively filtered, undamaged and re-injectable fat.

Easily change the luer lock harvesting needle to a luer lock re-injection needle on your original tissue trans aspiration syringe. The fat is collected and re-distributed from one source, a 10cc B&D luer lock syringe. Time saving simplicity at its best.

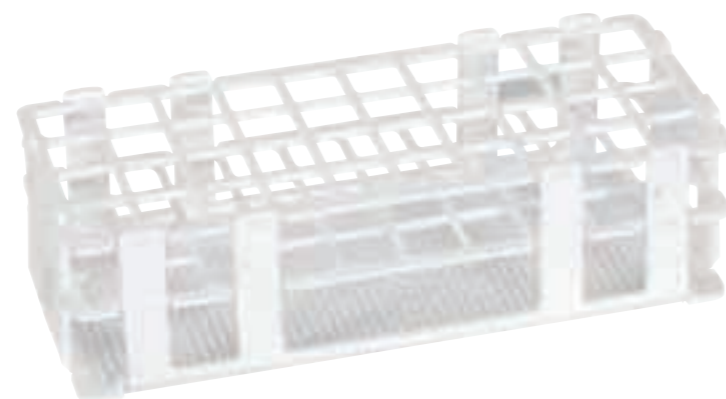
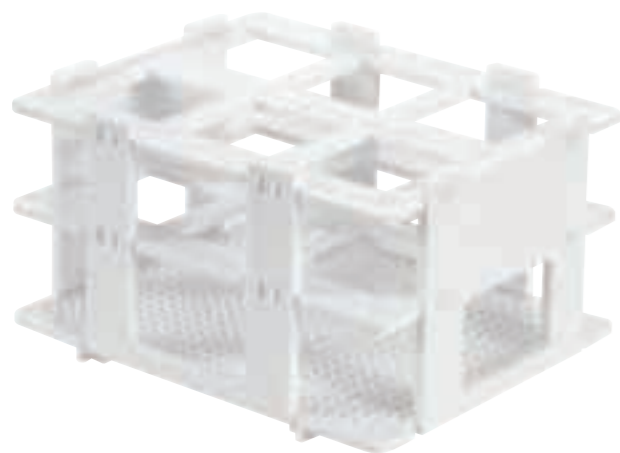
- Sterile/Disposable
- Time saving – Average Harvest period: two minutes – No centrifuge
- Cost effective
- Reduced trauma to Lipocyte



34 - 37 ■■■ Syringe Racks

Medical grade plastic to withstand high sterilisation temperatures. Aids harmoniously in transfer and injection procedures. 5cc, 10cc, 30cc and 60cc syringe holders available.

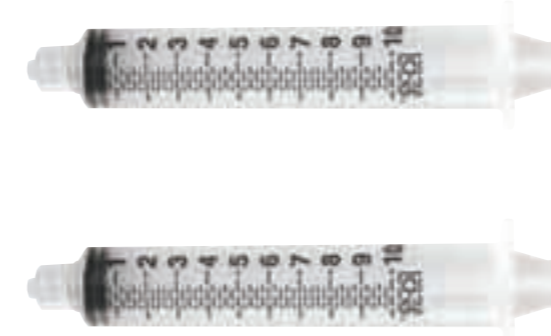
- 34 ■■■ MIC/5ccRK
- 35 ■■■ MIC/10ccRK
- 36 ■■■ MIC/30ccRK
- 37 ■■■ MIC/60ccRK



37 ■■■ MIC/60ccRK

34 ■■■ MIC/5ccRK

39 ■■■ MIC/TIS/TRANADD – Tissue Trans System SPARE 10cc Syringe Packs



### STEP 1 - CHOOSE A STANDARD CANNULA DIAMETER AND LENGTH

- 2mm x 10cm
- 2mm x 15cm
- 3mm x 20cm
- 3mm x 25cm
- 4mm x 30cm
- 5mm x 30cm

ACTUAL SIZES

### STEP 2 - CHOOSE A TIP STYLE

**40 ■■■ M – Mercedes**  
Three evenly spaced holes around the tip

**41 ■■■ BP – Barbers Pole**  
Downward spiral from near tip

**42 ■■■ L - Lantern**  
Bowed for use with fibrous tissue

**43 ■■■ TS - The Scream**  
Two holes above one on one side of the cannula

**44 ■■■ OH - One Hole**  
Simply one hole on one side of cannula

**45 ■■■ S - Submental**  
Spatula backed for use close to the skin

### STEP 3 - CHOOSE A HANDLE STYLE

- 46 ■■■ TS – 60cc Toomey Syringe Hub
- 47 ■■■ M – Machine Handle
- 48 ■■■ LL - Luer lock

### STEP 4 - DO YOU HAVE SPECIAL INSTRUCTIONS?

Please note adding a special instruction to your order will delay delivery for up to two weeks

- 49 ■■■ RAH - Right Angled Handle
- 50 ■■■ V - Vented
- 51 ■■■ CB - Cannula Brush
- 52 ■■■ C - Curved
- 53 ■■■ B - Bent
- 54 ■■■ RSN - Reinforced Swan Neck Handle
- 55 ■■■ SC - Size Change

Please specify diameter and length required

### CANNULA SELECTION CHART

**INSTRUCTIONS**  
Please enter your selections into the chart on the right. The first column in red is an example of how to use this chart.  
  
If you require brushes please insert number of units in this form. These will be supplied in the relevant diameters.

UNITS REQUIRED	STEP 1	STEP 1	STEP 2	STEP 3	STEP 4	STEP 4
	LENGTH CM	DIAMETER MM	TIP CODE	HANDLE	BRUSH UNITS	SPECIAL INSTRUCTION
4	30	4	M	M	4	V, C

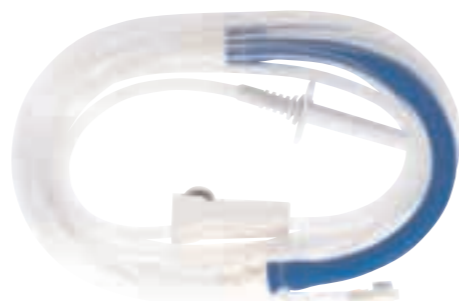
**56 ■■■ INF/PUMP - Infusion Pump**

This reliable vibration free and quiet irrigation pump is capable of infusion rates from 20 to 1020 ml per minute. Easy to load and use and controlled by foot switch. Uniquely capable for such a small portable machine.

- Up to 1020ml/min
- Forward and reverse capable
- Isolation Transformer
- Over speed correction
- Optical cut off switch
- Safety interlock



**57 ■■■ INF/TUB – Infusion Pump Tubing 4m/13 feet**



**58 ■■■ INF/CUFF – Manual Pressure Cuff 1000cc**

Allows pressure controlled infusion from any standard I.V. Bag. 3000cc extension available.



**59 ■■■ INF/HAN – Infiltration Handle**

This infusion handle, with on/off control, offers maximum control for infusion during the tumescent technique.

A push button on the handle allows the local anaesthetic to flow through the handle to the needle. Once the button is released the flow is effectively stopped, which will end annoying leaks and sprays that can be a part of this procedure.

The handle is also equipped with the proper leur-lock to allow it to attach to an I.V. extension and accept any leur-lock needle.

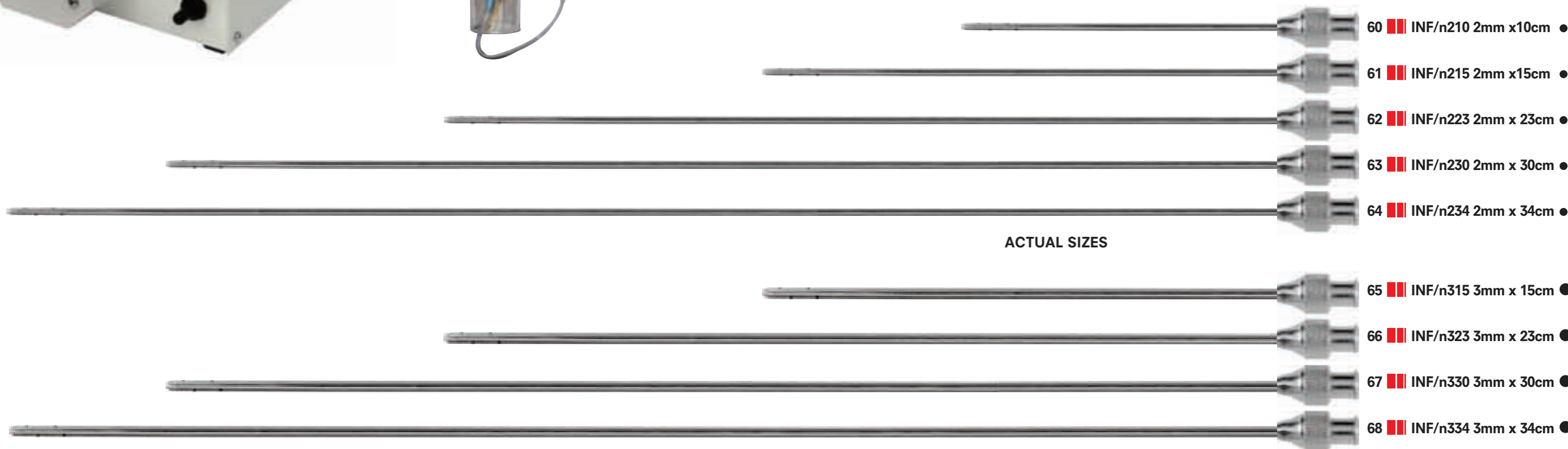


**60 - 68 ■■■ INF/n – Infiltration Needles**

Six holes in a spiral to allow optimum delivery of tumescent fluid. Leur-lock fitted.



STANDARD SIZES LISTED BELOW ALTHOUGH ANY SIZE CAN BE SPECIALLY REQUESTED



ACTUAL SIZES

60 ■■■ INF/n210 2mm x10cm ●

61 ■■■ INF/n215 2mm x15cm ●

62 ■■■ INF/n223 2mm x 23cm ●

63 ■■■ INF/n230 2mm x 30cm ●

64 ■■■ INF/n234 2mm x 34cm ●

65 ■■■ INF/n315 3mm x 15cm ●

66 ■■■ INF/n323 3mm x 23cm ●

67 ■■■ INF/n330 3mm x 30cm ●

68 ■■■ INF/n334 3mm x 34cm ●

## 69 ■■■ ASP/PUMP (2540-2) - Liposuction Aspirator

The Phantom aspirator is the most technologically advanced high powered aspirator available on the market today. A solid reliable "work horse", incredibly quiet, yet powerful, the Phantom has been designed and engineered to out perform all other surgical suction devices.

As a unique feature the Phantom can allow for attachment of up to 4 collection canisters at one time (Abbott 2000ml system) this requires ordering separately, standard machine supplied with one canister. Surprisingly compact and mobile for such a powerful machine the Phantom is ideal for all sizes of hospital theatre.

1/3hp.0-3.6 scfm/0.27.5 in. hg. @ sea level.

The option of a remote wireless footswitch is now available.



## 70 ■■■ ASP/TUB - Disposable Tubing

Vital to successful power suction. Thick walled non collapsible non slip tubing made from a remarkably strong but light Polymer mixture. 10 foot lengths. Latex free.



## 71 ■■■ ASP/LIN - Disposable Liner

The liner is composed of a drainage receptacle and cap in a one piece unit, thus eliminating leakage and allowing disposal with no open contact.

## 72 ■■■ ASP/FIL - Disposable Filter

The new H.E.P.A. "High Alpha" 0.3 micron aspiration filter is a true high flow filter. The media is 144 square inches of pleated H.E.P.A. fibreglass material. Under use with high powered aspirators the media will not tear or obstruct. The housing is moulded from an unbreakable virgin polycarbonate. At a DOP rating of 99.975%, the HFIFD will filter up to 225 litres of air flow per minute.



## 73 ■■■ ASP/CAN - Abbott Canister

The Abbott canister system is the most popular collection system used to date and is simple and easy to use. Reinforced container shell to stop implosion.

## 74 ■■■ ASP/FLEX-T

Upgrade your canister system with the flexible Abbott T.

## 75 ■■■ ASP/SS-T

Stainless steel Abbott T. reduces breakage risk. Useful to frequent users.



**76 ■■■ FULL BODY PANTY GIRDLE**

Unique four way stretch fabric gives perfect compression.

	WAIST	HIPS
S	23"-25"	28"-36"
M	25"-29"	30"-39"
L	29"-33"	34"-43"
XL	33"-37"	40"-49"

270: PANTY GIRDLE  
570: ABOVE THE KNEE  
770: BELOW THE KNEE

Cloverleaf's extensive range of high quality pressure garments have been designed to offer optimum comfort-support-results. Using state of the art 4 way stretch materials developed by N.A.S.A. for completely balanced compression. Silver lined for optimum bacterial resistance and ideal for oedema and ecchymosis control, the Cloverleaf garment applies ideal levels of sustained compression in even measures throughout.

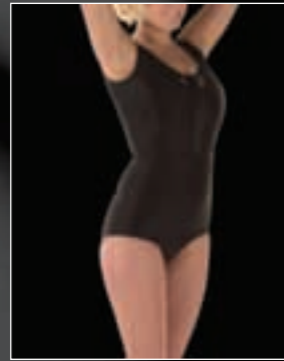
Popular with patients and medical staff we can confidently guarantee that the garments are both easy to place and fasten and easy to wear. Patient comfort = patient compliance = reduced pain + better results.

**77 ■■■ BODY MOULD GIRDLE**

Side zippers and hook & eye closure for ease of fitting - padded from direct skin contact.

	WAIST	HIPS
S	23"-25"	28"-36"
M	25"-29"	30"-39"
L	29"-33"	34"-43"
XL	33"-37"	40"-49"

500: ABOVE THE KNEE  
700: BELOW THE KNEE  
900: ANKLE LENGTH



76 - 270 ■■■



76 - 570 ■■■



76 - 270 ■■■

**78 ■■■ 100: FACIAL CHIN & NECK**

S, M, L, XL

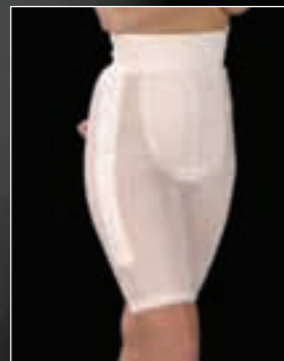
**79 ■■■ 200: COMPRESSION BRA**

	CUP	BACK
S	A/B	30"-32"
M	C/D	34"-36"
L	D/E	38"-40"
XL	E+	42"-44"

**80 ■■■ ABDOMINAL BINDER**

New space age fabric is ten times stronger than conventional elastics. Includes adjustable velcro closure.

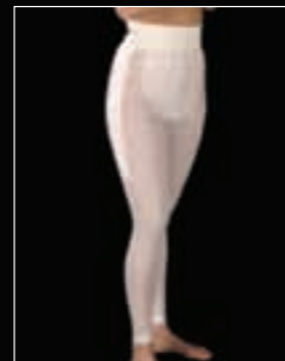
	Width	Length
S	22"-26"	9" Width 110
M	26"-30"	12" Width 115
L	30"-34"	18" Width 150
XL	34"-38"	



77 - 500 ■■■



77 - 700 ■■■



77 - 900 ■■■

**81 ■■■ 300: FEMALE GIRDLE (WITH ZIPPER)**

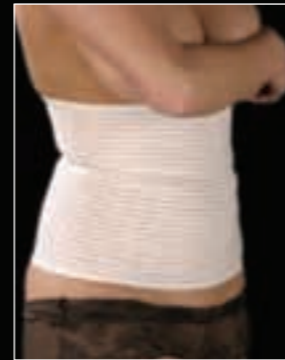
	WAIST	HIPS
S	23"-25"	28"-36"
M	25"-29"	30"-39"
L	29"-33"	34"-43"
XL	33"-37"	40"-49"



78 - 100 ■■■



79 - 200 ■■■



80 ■■■

**82 ■■■ 400: ARMS**

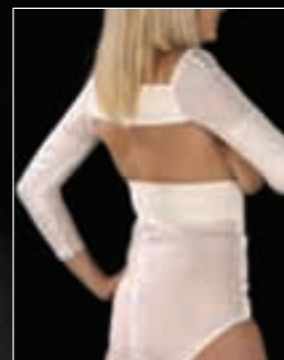
S, M, L, XL

**83 ■■■ 410: FEMALE VEST**

S	34"-36"
M	36"-38"
L	34"-40"
XL	34"-46"



81 - 300 ■■■



82 - 400 ■■■



83 - 410 ■■■

**84 ■■■ TUBI SOCK: 190**

S, M, L

**85 ■■■ MALE GIRDLE: 210**

	WAIST
S	28"-32"
M	32"-36"
L	36"-40"
XL	40"-44"

**86 ■■■ MALE VEST: 310**

	CHEST
S	36"-38"
M	40"-42"
L	44"-46"
XL	48"- +



CLOVERLEAF MEDICAL  
SUPPLIERS OF SURGICAL PRODUCTS

